



May 2026

Special points of interest

- East West Rail
- Housing Needs Survey
- Haslingfield Market

Dates to note

- Upcoming Parish Council meetings -
8 June
13 July
10 August
14 September
12 October

Inside this issue:

Page 1:

East West Rail hiding the horrors of construction

Page 2:

Response to our recent Housing Needs Survey

Traffic concerns

Playground & skatepark

Go down drains

Page 3:

Tree planting as part of the Covid-19 Day of Remembrance

Nature Reserve – In Our Own Gardens?

Page 4:

Haslingfield Village Hall Market

Parish Council elections

Is East West Rail hiding the horrors of construction?

The latest public consultation documents released by East West Rail (EWR) this April present a vision of a project where construction impacts on local residents are meticulously managed and controlled. However, a closer examination of the reality behind these assurances reveals a far more disruptive future for Haslingfield, Harlton and Harston. For example, while the documents suggest that some activities may merely 'continue into the evening', EWR representatives have confirmed that excavation at the Chapel Hill tunnel and the associated earth-moving operations will actually proceed 24 hours a day, seven days a week for approximately two years. One EWR source at a recent drop-in event indicated that construction may start as soon as 2029; it is likely to be somewhat later.

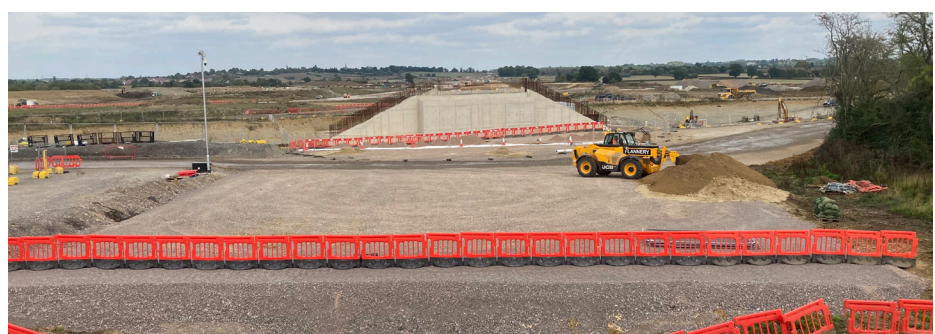
Infrastructure Under Pressure The logistical challenge of this project is immense, requiring the transport of hundreds of thousands of cubic metres of earth via heavy goods vehicles (HGVs) on our local road network. Despite EWR Co.'s claims of effective mitigation, their proposed routes raise serious questions about local practicality. For instance, plans to route HGV traffic along Church Street in Harston – past the local surgery – appear to ignore the realities of parked cars on such a narrow road and the significant difficulty long vehicles face when turning right onto the A10.

Our local B roads are simply not engineered to withstand such high volumes of heavy traffic. The severe pothole damage witnessed over the last winter will seem trivial if contractors do not commit to regular, ongoing repairs throughout the project's duration rather than waiting until the works are complete.

Lessons from Buckinghamshire We need only look to the recent construction of the EWR section in Buckinghamshire to see the potential for local devastation. There, residents were left grappling with appalling road conditions and unexpected closures, leading to such significant distress that a Commons adjournment debate was required to seek resolution. Troublingly, EWR Co. is proposing the same 'self-policing' community liaison and complaints procedures that failed so spectacularly in Buckinghamshire. In response, we have secured the support of the Mayor, Paul Bristow, to push major reforms to the complaints process including a construction ombudsman to advocate on our behalf.

A Critical Window for Action It is vital to remember that these plans are not yet set in stone. The northern approach into Cambridge remains a viable, more cost-effective and less environmentally damaging alternative to the current proposal as confirmed by EWR Co.'s own consultants.

The ongoing consultation, which concludes on **9 June**, represents a crucial opportunity for residents to show that we do **not** acquiesce to these plans. To assist residents in framing their responses, Cambridge Approaches will soon publish detailed consultation notes on their website (www.cambridgeapproaches.org.uk). In the face of such significant disruption, silence will inevitably be interpreted as consent. We **must** speak now to influence the future of our villages.



A positive response to our recent Housing Needs Survey

A big thank you to everyone who responded to the recent Housing Needs Survey which was sent to every house in the parish by Cambridgeshire ACRE on behalf of the Parish Council.

The aim of this survey was to determine what, if any, need there is for more 'affordable' housing in Haslingfield for people with a local connection who wish to buy or rent in the parish. The survey additionally sought to find out what level of support there would be for a small number of affordable houses to be built in the parish should a need for same be identified.

The Parish Council is still awaiting the full report from ACRE. However a short executive summary has been provided which gives a brief outline of the number of responses to the questionnaire and shows that a level of need has been identified – and that there is support in principle for a small development of affordable housing.

What the survey revealed

All 682 residential addresses in Haslingfield were invited to participate in the survey and there were 175 responses – approximately 26 percent - which is a very strong response given that most of ACRE's other Housing Needs Surveys only achieve between 15 and 20 percent response.

The survey revealed very strong backing for affordable housing, with 82 percent of those who responded expressing their support. Residents advocated for eco-friendly, small-scale properties accessible to locals, addressing diverse needs and prioritising those with parish ties. Those not in favour of any development expressed concerns about insufficient infrastructure and services, and remained sceptical due to prior development experiences.

Overall, the evidence from the survey supports the provision of a modest number of new homes over time, with a clear requirement for affordable housing that cannot be met by the market alone, a balanced mix of affordable rent and low-cost home ownership, and a strong emphasis on smaller, accessible and energy-efficient dwellings, secured where possible for households with a verified local connection. Such an approach would support downsizing, enable younger households to establish themselves locally, and help maintain a mixed and sustainable community.

What happens next?

When the Parish Council has the final report, it will be presented and discussed at one of our regular monthly meetings. Given that the survey indicates that there is a measurable need for additional affordable housing in the parish, we will take advice from ACRE about how to take things forward.

Traffic concerns in the village:

20mph scheme

Thanks again to all of you who completed the questionnaire regarding applying for a 20mph speed limit throughout the village.

As the majority of replies were in favour, the Parish Council applied to the Cambridgeshire County Council Highways scheme. A response is expected in October 2026. We will keep you informed as soon as we have any further news.

Parking restrictions by the school

The Parish Council applied for double yellow lines by the school back in 2025 and was successful. The implementation of this takes time, and they are likely to be painted in summer 2027.

What can go down drains

If you ever wonder if an item is flushable, please remember the 3Ps of what can be put in the toilet – pee, poo and paper. Wipes, even 'flushable' wipes, cause 80% of the blockages in the sewer system, so please throw those away, rather than flushing them in the toilet. Other items to throw in the bin include sanitary items, cotton buds and pads, make up wipes, hair, dental floss, nappies, wet wipes and baby wipes. When in doubt, throw it out (rather than flush)!

Potholes

Potholes continue to be a problem throughout the area. Potholes are outside of the Parish Council's remit, but you can report issues to Cambridgeshire County Council Highways on their new Report It! Tool, found on their website at <https://highwaysreporting.cambridgeshire.gov.uk/en>.

If the potholes are on smaller roads in the village, please also email the Clerk (clerk@haslingfieldparishcouncil.gov.uk), in order to our inform our County Councillor, as he is also keeping a record.

Playground and skatepark repair

We have wonderful facilities in the village for children in the form of the playground and the skatepark. Every year, they are assessed to ensure they are in great shape for the children to play safely.

The Parish Council has recently carried out repairs in the playground, including new wet pour surfacing under the tallest of the equipment, renewal of the wooden posts on the multi-play equipment in the middle of the park, as well as smaller repairs. The rest of the surfacing will be repaired in stages over the next few years, due to the cost.

If you note any defects at the playground or skatepark, please let the Clerk (clerk@haslingfieldparishcouncil.gov.uk) know.



Tree planting as part of the Covid-19 Day of Remembrance

Nearly 60 parish and town councils across South Cambridgeshire were given free commemorative blossom trees by the District Council to honour community volunteers and remember those affected by the COVID-19 pandemic.

The trees were been provided for this year's UK-wide COVID-19 Day of Reflection (<https://dayofreflection.campaign.gov.uk>) which took place on Sunday 8 March 2026.

South Cambridgeshire District Council offered all parish and town councils a free wild cherry tree. The idea is for the trees to stand as living tributes to the strength and compassion shown by the community during the pandemic. The Council hopes the trees will grow as symbols of resilience, kindness and hope for generations to come.

The trees were provided with a plaque that honours the volunteers who gave their time and care to support those in need and to remember all who were impacted and those who lost their lives.

Haslingfield's tree has been planted on the village green near a bench so that it can provide shelter and shade in the years to come.

More details of the Covid-19 Day of Remembrance are available at <https://www.scambis.gov.uk/news/almost-60-parish-and-town-councils-given-trees-to-mark-covid-19-day-of-reflection>



Could Haslingfield Have a Nature Reserve - In Our Own Gardens?

Have you watched the new BBC series, Secret Garden? Narrated by Sir David Attenborough the programme illustrates the diversity of nature that can be achieved by wildlife friendly gardening practices.

Haslingfield has been selected by Cambs County Council as one of a few parishes to trial an exciting new scheme called Nature From the Ground Up! This is a wonderful opportunity to log the biodiversity of our collective gardens and work together to provide even more habitat for nature to thrive in Haslingfield.

Haslingfield is full of gardens and green spaces that are already wildlife friendly, but there is always room for more! So, as part of our From the Ground Up participation we want to try and map all of these features – to create a kind of map mosaic of nature recovery at work in our gardens, which we will call Haslingfield's Homes for Nature. This will hopefully encourage more families to take part and also help us to see where we have nature corridors – gardens which are interconnected via hedgehog sized holes or spaces in fencing. These "hedgehog highways" allow wild creatures to move freely as they search for food and shelter.

The project will be launched on June 14th as part of the Parish Council sponsored Family Day in Nature at the Wellhouse Meadow, 3-6 pm – a gala event which includes Bakehouse pizza, arts and crafts activities, insect netting with the Wildlife Trust, and much more. See <https://www.hheco.co.uk/whatson/2026/3/5/familyfunday> for more details.

In the meantime, if you would like to take part, please contact the Eco Group at HnHeco@gmail.com. Just drop us a line with your address and details of your wildlife feature – whether it's a pond, a hedge, a pot of pollinator friendly flowers or a stately tree – we want to know about it!



Haslingfield Village Hall Market

It is coming up to a year since we held our first Village Hall Market. It proved to be successful, well attended and a great atmosphere, but since then it has gone from strength to strength.

Bacon butties on offer from the kitchen have been a nice addition, as well as the refill station in the car park - you asked for them both.

We currently attract about 20 different stall holders and have a good proportion selling produce, including pasture-raised chicken, fruit and vegetables, cheese, cakes and pastries, eggs, wine, beer and gin. Again, the absence of them to start with was commented on by many of you. We change several stall holders regularly, so you will always see some different stall holders each month.

We are now also being approached by stall holders who wish to take part, which is quite a compliment.

We have also been successful in attracting a couple of our villagers, including Jane Horwood, Jo Lillicrap, Sally Nott, Chris & Martha Oakes, Karen Read and Barbara Seagrave. It would be great if we could attract even more of you.

When the Trustees agreed to set up the market, we decided that it wouldn't be a fund raising exercise, but a facility for the villages, and on that theme we offer one stall monthly to a charity free of charge. So far we have attracted The Alzheimer Society, Support for an African Family and the Scouts Association.

I keep saying 'we' - we must give the credit to Catherine Huntington, who tirelessly promotes the markets and has been successful in attracting a wide range of stall holders each month.

Thank you if you have visited the monthly markets. It can only be successful if we can attract you and visitors from other local villagers, so please tell your family and friends. If you have not yet popped into one of the markets, please do. Even if you do not want to buy anything, it a good place to have a drink and catch up with fellow villagers.

If you have any comments or suggestions, I am sure Catherine would love to hear from you.

You can contact her at hasingfieldmarket@outlook.com.

The markets take place on the last Sunday of each month from 10am to 1pm.

Jenny Jullien



Council Elections

In South Cambridgeshire, District Council and Parish Council elections took place on 7 May. The Parish Councillors in Haslingfield stood unopposed and therefore were all re-elected this year.

Your Parish Councillors are **Richard Ellis, Andrew Gillies, Liz Hales, William Harrold, Steve Jones, Ann O'Brien, Diana Offord, Robin Perry, David Revell, James Roberts and Andrew Tipler.**

The results of the District Council elections were announced just before printing, so we can inform you that your District Councillors are: Lisa Redrup, Laurence Damary-Homan and Ariel Cahn. We look forward to working with them.

Residents are welcome to speak to any of the Parish Councillors, but it is recommended that should you wish to contact the Council, you contact Lise Jackson, Parish Clerk in the first instance (clerk@haslingfieldparishcouncil.gov.uk, 07365 223426).

