

VACANCIES

Administrator to the Badcock Recreation Ground Trust

The Parish Council is looking for someone to support the Trust that runs the Village Hall for approximately 6 hours a week. The appointee will report to the Parish Clerk. The ideal candidate would have a good working knowledge of Microsoft Word and Excel, be a good administrator and have sound communication skills. You will be required to work an average of six hours per week, mostly working from home and be available to attend occasional evening meetings to take the minutes. Full training will be given. The rate of pay is based on NALC's Salary Scale 19 at £14.48 per hour.

If you are interested in applying or would like to know more details about the role please contact Lise Jackson, Parish Clerk at clerk@haslingfieldparishcouncil.gov.uk or 01223 870269.

Caretaker

The Parish Council is looking for a caretaker the Village Hall for approximately 10 hours a month. The appointee will report to the Parish Clerk. The role involves inspecting the hall weekly, internally and externally, and carrying out or reporting any necessary repairs; setting the heating system to accommodate bookings; carrying out repairs and maintenance agreed with the Clerk; attending quarterly meetings and meeting contractors. The hours are flexible, and the rate of pay is £12.00 per hour.

If you are interested in applying or would like to know more details about the role please contact Lise Jackson, Parish Clerk at clerk@haslingfieldparishcouncil.gov.uk or 01223 870269.

Parish Councillor

There are currently two vacancies for councillors on the Parish Council. If you want to make a real difference in your local community, please contact the Parish Clerk (clerk@haslingfieldparishcouncil.gov.uk) in the first instance or simply come along to a meeting. Previous experience is not required, although you need to live or work in the village. The Parish Council meets at 7:30 pm on the second Monday of the month at the Village Hall.

Applications welcome from those over 18 who have lived or worked in Haslingfield for more than 12 months and are a UK or EU National.

New emails

The Parish Council has recently changed its email addresses. The new addresses are all now in the format firstname.surname@haslingfieldparishcouncil.gov.uk. When in doubt of who to contact, please contact the Parish Clerk clerk@haslingfieldparishcouncil.gov.uk or call on 01223 870269.

Potholes

While Cambridgeshire County Council has been working hard to fill the pot holes in the county, you may still see pot holes that are of concern.

Please report them to Cambridgeshire County Council's Highways department through their website at <https://www.cambridgeshire.gov.uk/residents/travel-roads-and-parking/roads-and-pathways/roadworks-and-faults> or search for "Cambridgeshire Report a Fault".

In need of a Wheelchair?

Need a wheelchair for a short time or have someone visiting who is mobile but not quite enough for exploring the village? There are 2 wheelchairs for residents to borrow for short term occasional use which are stored in the Methodist Church.

For more details please contact Christine Kipping on 01223 870227.



Your Current Parish Councillors are:

Diana Offord (Chairman), Clive Blower (Vice-Chairman), Andrew Gillies, Liz Hales, Ruth Hatfield, Ben Mavely, Ann O'Brien, David Revell, James Roberts

Haslingfield Parish Council welcomes communication from all its residents.

If you have any comments/questions on this Newsletter or any other local issue, please contact Haslingfield Parish Clerk (Lise Jackson) in the first instance by emailing clerk@haslingfieldparish.co.uk or calling 01223 870269



Haslingfield Parish Council News

Keeping the village up to date about local Parish Council matters



August 2023

Special points of interest:

- Skatepark Update
- Vacancies – Administrator, Caretaker and Parish Councillor

Dates to note:

- Upcoming Parish Council meetings – 14 August, 11 September, 9 October
- Skatepark opening – TBD – keep an eye on Facebook and noticeboards
- Bonfire Night – 5 November

Inside this issue:

Page 1:
Skatepark Update
Haslingfield Parish Council finances 2022-2023
Neighbourhood Plan

Page 2:
Police
Tree survey
Hedges

Page 3:
Haslingfield School Biodiversity Strategy

Page 4:
Vacancies
New emails
Potholes
In need of a Wheelchair?

Skatepark Update

The Parish Council has been working on the revamp of the skatepark for many years now, and it is pleased to announce that ground has been broken for the new skatepark! Work is well underway - all the ground work has been completed, which involved breaking up and crushing the existing concrete base, then recycling the crushings to form the foundations for the new ramps and bases. All the formings are now in place, awaiting pouring of the concrete. This will create the shapes, and the space will begin to look like the intended design.

In order to make the skatepark be more visible and welcome to all users, the hedge next to the footpath will be lowered. You may see work carried out on the hedge in the next few months.

The councillors are excited about seeing the finished product and anticipate completion mid-August, all being well. Please keep an eye out on the PC Facebook page and noticeboards for the official opening date over the next few weeks.

The PC is considering a second stage of the development of the skatepark, which would provide an entrance from the River Lane footpath, outdoor adult gym equipment and resurfacing of the basketball court.



Watch this space

Haslingfield Parish Council finances 2022-2023

Every year the Parish Council produces accounts, which are available for the public to view. The accounts comprise several documents, some of which are specific to the local authority sector. You can find them on the noticeboards and the PC website <https://haslingfieldparishcouncil.gov.uk/finance>.

These accounts have been audited by our internal auditor and have been sent to the external auditor for review. The results of the external audit will be posted on the website and on the noticeboards when they have been received.

If you would like further information about the Parish Council finances, please contact Lise Jackson, Parish Clerk.

Neighbourhood Plan

In June 2023, the Parish Council voted to formally start work on the Neighbourhood Plan. As you may be aware, a Neighbourhood Plan (NP) is a way for local communities to have a say in the future of the places they live and work. Neighbourhood Plans, once approved by the local authority, have to be considered by the planning authority when making planning decisions.

Councillors Ann O'Brien and Diana Offord are researching NPs and the best practical way to get started.

If you are interested in helping, please contact the Parish Clerk clerk@haslingfieldparishcouncil.gov.uk. You do not need to commit to working on the whole plan or attending lots of meetings. You could volunteer to research or write one section, or you could volunteer your time to help administer the project.


Police

Anti-social behaviour is the most common cause of reports to the Police in our area. This can cover a range of activities from criminal damage to threatening behaviour. There have been various reports on social media recently of anti-social behaviour in the village, some of which has been reported to the police.


Every quarter a South Cambridgeshire Police Liaison committee meeting is held online over MS Teams and is a chance for residents or their representatives to raise any issues of concern relating to crime in their area. During the most recent one in May, I raised the issue of anti-social behaviour in the village, and the Police encouraged any incidents to be reported to them in order for them to choose the correct method of action. If the person(s) responsible for the behaviour are known, the Police can take a variety of actions which do not always result in a criminal record for the person(s) involved. At the very least it provides the Police with information on where they can best direct their resources.

Another method for feedback to the Police on concerns around any type of crime is to complete the crime survey which is open to any resident to complete through this link <https://bit.ly/3Wx8krJ>

The next Police Liaison committee meeting for South Cambs will be held on the evening of the 8th of August and is open for all residents to attend. You just need to register in advance using this link <https://www.eventbrite.co.uk/e/south-cambs-community-engagement-meeting-august-2023-tickets-491855191117>. I will be attending myself and can also raise any issues on your behalf, so please contact me if there is anything you would like me to raise at james.roberts@haslingfieldparishcouncil.gov.uk



Cambridgeshire Constabulary



Tree survey

This month the Parish Council received its three yearly professional report on the condition and hazard assessment of all trees on parish land for which it is responsible. With this in hand councillors have been walking round the village, looking again at all the trees and agreeing on priorities and timing for the work recommended. They were pleased that any resultant damage from last year's drought, the very cold winter and high winds was not as apparent as had been anticipated.

At this stage the priority work is on some of the trees overhanging the road on the New Road end of Cantelupe Road and on two large Raywood Ash trees at the back of the recreation ground, which have dead wood and are at risk of splitting due to their height. Where you see cutting back and pollarding of trees here, and in other locations, be assured that this will always be a result of an assessed risk and if damaged or dangerous trees need to be removed, the option of replanting will be explored.

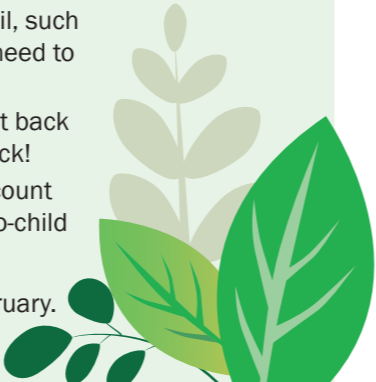
Hedges

As it is now August, homeowners are allowed to cut their hedges, having avoided the bird nesting season (March through July).

If you have hedges and trees that overhang highways property, you may need to cut them back. If you are in doubt of how far you need to cut back, then the following are a couple of useful tips:

- Any street furniture placed by the Highways Division; Cambridgeshire County Council, such as a lamppost, street sign or street lighting will always be on Council land and you need to cut back to behind these.
- All pavements are Cambridgeshire County Council property so again you need to cut back to the edge of this. You may need to remove vegetation to check how far it goes back!
- Hedges and trees should not impede anyone, and the height needs to take into account a tall person carrying an umbrella and the width required by a person pushing a two-child buggy, a wheelchair or someone walking with a guide dog.

Any work that needs to be undertaken should be carried out between August and February.



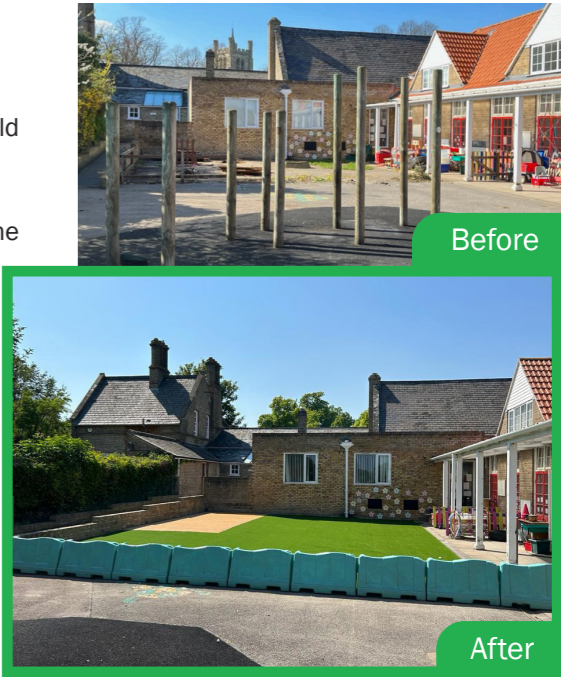
Help given to PTFA to attract new pupils to Haslingfield School

Earlier this year the Parish Council was approached by the Haslingfield Endowed Primary School Parent, Teacher, and Friends Associations (PTFA) to help fund a new and improved Early Years play area.

The chair of the PTFA informed us that due to the demographics of the Village the number of children joining the school had fallen, meaning that it is important to attract pupils from other areas, especially for the Early Years.

During the first years at school pupils have a dedicated outdoor area as a classroom. This area, and one for the rest of Key Stage 1, had become tired and broken and was not inviting for the children nor visiting potential pupils and parents.

The Parish Council felt giving support for this has significance for the whole Village and, along with the Haslingfield United Charities and PTFA, have raised the money for the ground work to be completed. Now the school are looking at providing the equipment and planters to fully utilise the area.



Is Our Village Buzzing? A Biodiversity Strategy for the Parish!

Insects had a slow start in the Southern UK this year, with people across England reporting fewer flying insects than usual right through May – peak blossom season! Insect numbers have been in steep decline for a number of reasons, including overuse of pesticides, loss of habitat for breeding and food, and the weird weather that has come with climate change. This was sad as so many people chose to take part in no-mow May so there was lots of bee-food available in our village! Luckily, as the weather warmed in June the bees, hoverflies and butterflies came out and the mowing reductions in places like the Wellhouse Meadow paid off.

The Meadow is not yet as diverse in its plant life and wildflowers as we hope it will be, but even just reducing mowing has made a big difference, because grass and “weeds” are food and habitat! Did you know that stinging nettle leaves are the favourite caterpillar food for at least three species of butterflies, including my favourite, the gorgeous peacock, as well as many moths? Thistles and teasels also support huge numbers of insect and birds. Even pesky bindweed provides pollen for bees and the leaves are a source of food for the larvae of convolvulus hawk moths. So it's important that we strike a balance between control of

these fast-spreading plants and a meadow free-for-all. That's where a biodiversity strategy comes in.

The government has recently tasked all local councils with the job of creating biodiversity strategies for their areas. The first step involves collecting information about parish green spaces – where they are, what kind of habitats they hold, and what species have been seen there. Then the Parish Council will assess what it can do to protect these areas and make them better for nature. With the help of the Haslingfield and Harlton Eco Group and the Nature Recovery Toolkit provided by Natural England, the PC will be working on the biodiversity policy over the next few months. Assistance with this large task is very welcome, so if biodiversity is your thing, please contact the Parish Clerk clerk@haslingfieldparishcouncil.gov.uk to volunteer.

In other environmental news, there is now an environment page on the Parish Council website, as well as a list of useful links for everything from the PC climate emergency strategy to what goes into which bin to local nature reserves within 7 miles of the village. The useful resources page can be found at <https://haslingfieldparishcouncil.gov.uk/environment/useful-resources>.

