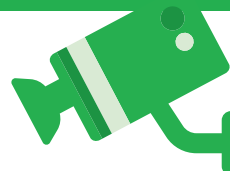


Speedwatch

An ongoing concern expressed by Haslingfield residents is the speed at which certain vehicles are repeatedly driven through the village. The Motor Vehicle Activation Sign, moved between key locations, will alert drivers to the fact that they are speeding and should act as a deterrent. However the only way we can advise the police about specific drivers is by monitoring the car registration numbers of those exceeding the speed limits.

We would therefore encourage you to think about getting together with other interested neighbours and volunteering some of your time to get the community Speedwatch up and running in areas that concern you most. Training and equipment will be provided.

If you feel you can help with this please contact our Parish Clerk, Lise Jackson at clerk@haslingfieldparish.co.uk or 01223 870269.



Pavement Parking

Go for a nice walk round the village, and at least once, you will be forced to walk out into the road or onto the grass because someone has parked fully or partly on the pavement. It is only polite to park so that nobody has to walk out into the road, especially people with mobility or sight issues, or people with children in pushchairs. Please ask your guests/tradespersons to park fully on the road too.

Also, you will be slowing the traffic by narrowing the road - the village gains twice.

If someone does block your way on the pavement, you can leave them a polite note telling them how they have put you at risk, or phone 101 and report them to the police - it is illegal to cause an obstruction.



Wellhouse Meadow planting

In response to concerns raised in relation to children and dogs accessing the moat from Wellhouse Meadow in an area not protected by vegetation, work has now been completed in temporarily raising the original wire fence and the planting of 7 hedgerow plants in front to mark the boundary and prevent future access to this area.

Appointments

We are pleased to welcome to new Councillors to the Parish Council – James Roberts (james.roberts@haslingfieldparish.co.uk) and Ann O'Brien (ann.obrien@haslingfieldparish.co.uk). We are sorry to say goodbye to Zoe Ratnasothy, who has stepped down as a Parish Councillor. We appreciate all the work Zoe has put into the Council during her tenure and wish her all the best.

This means the Parish Council still has two vacancies, so if you are interested in joining the Parish Council, please contact the clerk.

Your Current Parish Councillors are:

Diana Offord (Chairman), Clive Blower (Vice-Chairman), Andrew Gillies, Liz Hales, Ruth Hatfield, Ben Mavely, Ann O'Brien, David Revell, James Roberts

Haslingfield Parish Council welcomes communication from all its residents.

If you have any comments/questions on this Newsletter or any other local issue, please contact Haslingfield Parish Clerk (Lise Jackson) in the first instance by emailing clerk@haslingfieldparish.co.uk or calling 01223 870269



Haslingfield Parish Council News

Keeping the village up to date about local matters



May 2023

Special points of interest:

- Badgers
- Neighbourhood Plan
- Let It Grow

Dates of Interest:

- 15 May – Parish Council meeting
- 22 May – Annual Parish meeting
- 7 June – Neighbourhood Plan Zoom meeting



Inside this issue:

Page 1:
Neighbourhood Plan
Badger setts in and around the Wellhouse Meadow

Page 2:
Let It Grow
Recycling
Gritting Scheme
Potholes

Page 3:
Management of Trees on Parish Land
Overgrown hedges on our pathways and roads

Page 4:
Speedwatch
Pavement Parking
Appointments



Haslingfield needs a Neighbourhood Plan

South Cambridgeshire District Council approved Fulbourn's Neighbourhood Plan in March this year. As more and more communities adopt neighbourhood plans, together they can have a real impact on the future development of the area.

Fulbourn's plan includes policies that maintain the character of the village, consolidate green infrastructure, enhance the rural environment, protect and improve local amenities, deliver appropriate housing, and promote walking, cycling and riding.

The process of creating a plan takes time and effort, and it can only happen if we have a team of people who can divide the tasks up over a realistic span of time.

With this in mind, a group has now been formed to start the process of creating a Neighbourhood Plan for Haslingfield. To kick off, Histon resident Jon Pavey will join us on the 7th June via Zoom to talk us through how his community successfully carried out the process and what it has meant for them.

If you are interested in attending this event and/or finding out more, with no obligation to carry on, please contact Lise Jackson: clerk@haslingfieldparish.co.uk.

Join our online event to find out more: 7th June 2023, 7.30pm on Zoom

Zoom details: Meeting ID: 837 9744 3099 Passcode: 390804

Skatepark Update

We are now hoping to move into the early stages of the build process. Draft contracts have been drawn up for review at the next Parish Council meeting. Once agreed we're hoping to secure the site and commence with earthworks ASAP.

Now we need your help! We are looking to hold a Public Consultation on the 25th May from 4pm to 7pm at the Methodist Church to help review the design and plans for the area. If you have any ideas of equipment / layout – things you would like to see there, or would like information on the plans - we'd love to have your input and see you there. Betongpark, the contractors who will be carrying out the build, will also be on site to answer any questions.

Badger setts in around the Wellhouse Meadow

We are all aware of the number of badgers that live around our Village. They are a lovely sight to see, and, apart from feeling aggrieved when they get in our gardens to dig holes, eat our plants and strawberries, we can live alongside them.

In Wellhouse Meadow and the adjoining properties, there is a more significant problem of badgers burrowing under listed buildings to create extensions to their already large setts. No need from them to apply for Planning permission!

We have sought advice from an Ecologist. The advice includes a request not to feed badgers and a reminder that it is illegal to damage badger setts and that problems need to be dealt with legally.

We are gathering evidence from the properties of people who are affected by this badger activity and will be asking organisations for their help and support in dealing with this situation.



Let It Grow

Join the Harlton Wildflower Project

You are invited to join with other residents to create a patchwork of mini wildflower meadows throughout our village.

WHEN: This spring and summer 2023.

WHERE: Your own garden!

WHY: To improve our environment; to increase Harlton's biodiversity by encouraging a wider range of plants and insects; to attract pollinators such as bees.

HOW: Choose part of your garden and leave it unmown through the spring and summer. Wait and see what grows, and make a note of the butterflies, bees and other wildlife that will come and visit. Useful advice here: <https://www.wildlifetrusts.org/actions/how-grow-wild-patch-or-mini-meadow>

SHARE: Please tell us if you're planning to take part and then send us photos and updates so we can gather information and share the results with the village later this year!
Email: hasandharlecogroup@gmail.com

Haslingfield & Harlton Eco Group



Management of Trees on Parish Land



The Parish Council is responsible for management of the trees on parish land and our policy for this can be seen on the Parish Council website. A key element is a three yearly survey carried out by tree specialists. This was due to take place in February this year but has been rescheduled for May so that the trees are fully in leaf and the impact of last year's weather extremes is more evident.

In the February newsletter we told you about planned work on the vegetation in front of the village hall. The involvement of UK Power Networks was critical to ensure safety of this work and, unfortunately, their backlog meant that we passed the deadline to start this work in terms of the nesting season. The work is now rescheduled for later in the summer.



Recycling

In 2022, Cambridgeshire County Council ranked 39th of all councils for best recycling rates. 55% of rubbish in the county was recycled, short of the 65% target set by DEFRA for 2035. (Source: Nimblefins.co.uk)

You can do your part by recycling as much as possible. Batteries can be recycled kerbside by putting them in a small, tied bag and placing them on top of any colour bin. Blister packs for medicines can be recycled at the Methodist Church. Clothing can be recycled in the clothing banks at the bottom of Porker's Lane.

For information about other items, you can check South Cambs' website at <https://www.scambs.gov.uk/recycling-and-bins/what-goes-in-which-bin/> or look in SCDC's magazine, which is delivered through your door.



Gritting Scheme

After last winter's long freezes, there have been requests to start up a community gritting scheme in Haslingfield. The Parish Council would love to support this! We need some volunteers who would be happy to take responsibility for the scheme. It would involve keeping an eye on grit supplies and spreading the grit when pavements freeze over. The more volunteers we have, the easier it will be to keep our pavements ice-free. If you are interested in volunteering, please contact the clerk on clerk@haslingfieldparish.co.uk

Potholes

Potholes continue to be a problem, following a cold and wet winter. Last summer's drought has also had an impact on soil beneath the roads, causing further problems.

If you see a pothole of concern, please continue to report it on the Cambridgeshire County Council's website at <https://www.cambridgeshire.gov.uk/residents/travel-roads-and-parking/roads-and-pathways/roadworks-and-faults> or search for "Cambridgeshire Report a Fault".

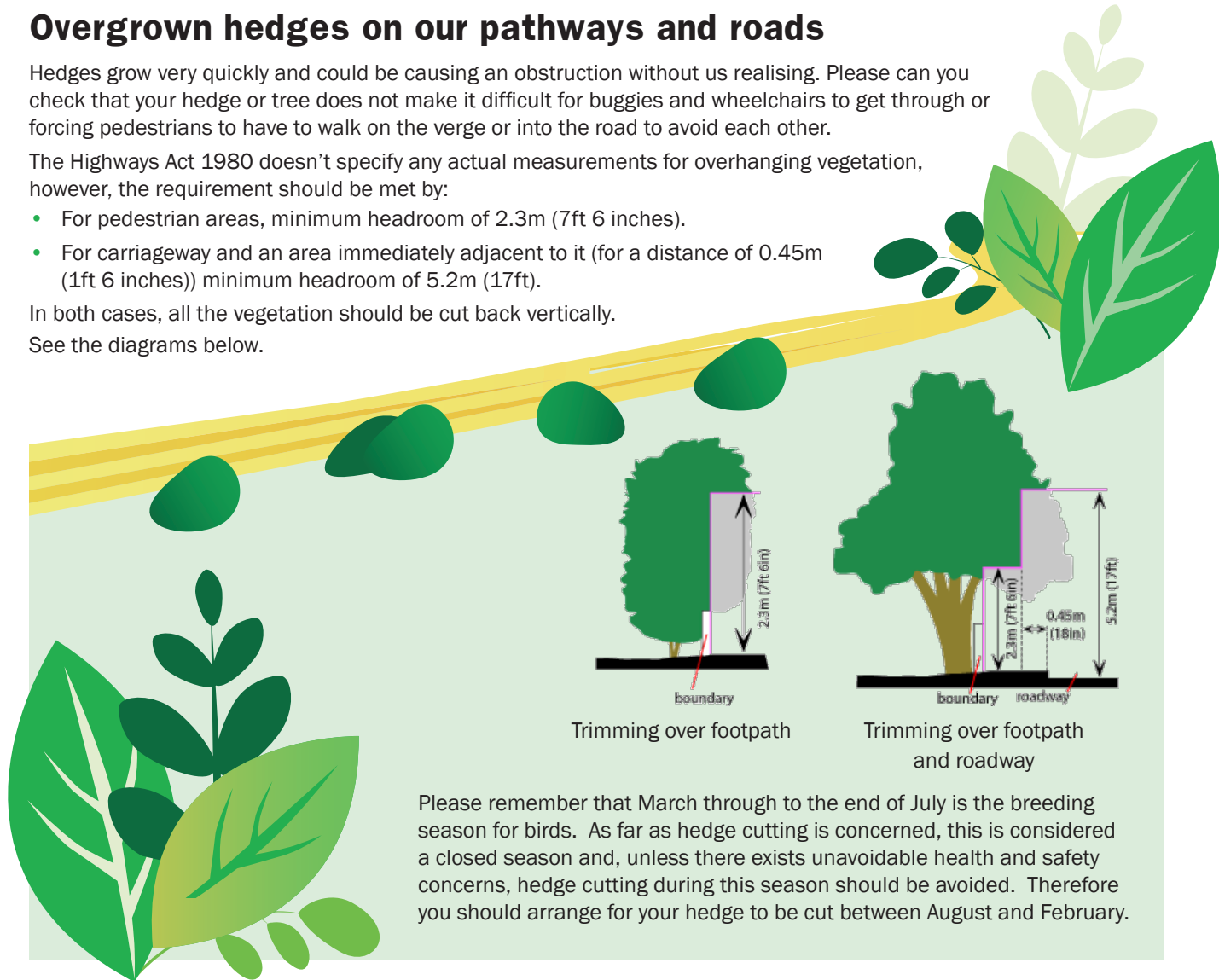
Overgrown hedges on our pathways and roads

Hedges grow very quickly and could be causing an obstruction without us realising. Please can you check that your hedge or tree does not make it difficult for buggies and wheelchairs to get through or forcing pedestrians to have to walk on the verge or into the road to avoid each other.

The Highways Act 1980 doesn't specify any actual measurements for overhanging vegetation, however, the requirement should be met by:

- For pedestrian areas, minimum headroom of 2.3m (7ft 6 inches).
- For carriageway and an area immediately adjacent to it (for a distance of 0.45m (1ft 6 inches)) minimum headroom of 5.2m (17ft).

In both cases, all the vegetation should be cut back vertically.
See the diagrams below.



Please remember that March through to the end of July is the breeding season for birds. As far as hedge cutting is concerned, this is considered a closed season and, unless there exists unavoidable health and safety concerns, hedge cutting during this season should be avoided. Therefore you should arrange for your hedge to be cut between August and February.